

STRUT MONSTER



Shown With Options

RANGE

up to 40 miles

UP TO 2 PASSENGERS

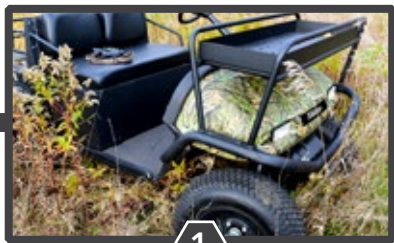


RATED CAPACITY

up to
800 lbs.

Tomberlin's Strut Monster is equipped with both front and rear cargo decks providing you with plenty of space to haul brush, cut wood or carry hunting gear. The Strut Monster can be upfit with an interchangeable winch that can be attached to either the front or rear hitch, trail ready tires, and marine grade vinyl seating to weather the elements.

Conservation is important, and with a 100% electric motor, the Strut Monster leaves an ultra low carbon footprint and a virtually noiseless ride. Engineered with the wilderness in mind and built for work, Tomberlin's Strut Monster is the vehicle of choice for turkey hunters, outdoor enthusiasts, and conservationists alike.



1



2

1 Mossy Oak® Obsession Hood

2 Front and Rear Cargo Decks



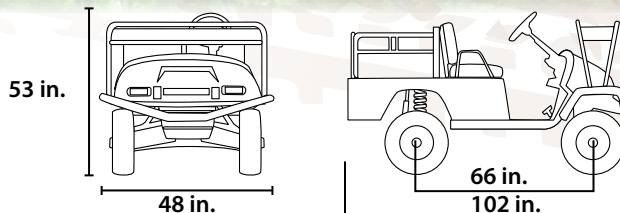
TOMBERLIN

WE GO FARTHER

STRUT MONSTER

Dimensions

Step Height:	17 in.
Load Bed Height:	32 in.
Ground Clearance:	6.88 in.



Performance

ESCAPE 48 Volt

Max Speed Forward:	15 MPH
Turning Radius:	Curb to Curb - 372 in.
Range ¹ :	Up to 40 miles

Weight & Capacity

Vehicle Weight :	1,258 lbs
Rated Capacity ² :	800 lbs.
Towing Capacity:	Winch Capacity 3,000 lbs.

Power Train

Motor:	DC separately excited motor Totally Enclosed Non-Ventilated (TENV) solid copper windings class H insulation
Horsepower:	15.3 HP
Batteries:	Eight, 6 volt, 232 amp hour, 122 minute
Charger:	Built in, micro-processor control, fully sealed, anti-drive away interlock, 110-240 VAC, 50/60 HZ
Controller Type:	Programmable, solid state, reduced speed reverse with diagnostic LED & calibrator interface
Controller Rating:	400 amp
Motor Braking Mode:	Regenerative and pedal proportional braking with top speed limiting
Directional Control:	Dash-mounted safety directional keyswitch
Drive Unit/Differential:	Direct drive, oil bath, helical gears; drive ratio 16.99:1

Body

Passenger Capacity:	Two
Seating:	Black Marine Grade Vinyl Bench Seat
Body:	14 gauge structural steel smooth plate front body panels
Lighting:	Dual recessed head, Tail and brake lights
Accessories:	In motion beeper, Forward and reverse, Hour meter, Driver seat power interlock switch, Horn, Single point battery watering system, Steel bulkhead, Battery discharge indicator, 48 V DC to 12 V DC converter, Powder coated steel plate deck

Chassis

Frame:	Tubular Steel
Steering:	Rack & Pinion
Brakes:	Rear drum, Hand operated parking brake
Suspension:	Front – Multi-Leaf Spring, Dual Shocks Rear– Dual Coil Springs, Dual Shocks
Tires:	OTR Lite foot

Features, options, specifications, color availability and model designation are subject to change without notice. Some vehicles are pictured with options that may be available at extra cost or may not be available on some models. Ask your dealer about the availability of options and verify that the vehicle you order includes the equipment you require.
¹ Range will vary depending on temperature, grade, payload and driving style. | ² Rated Capacity Includes personnel, cargo, options and accessories.

All specifications are subject to change without notice.

Columbia Vehicle Group, Inc.

A Nordic Group Company | Business Ventures Since 1947
 2505 Industrial St. Leesburg, FL 34748
www.tomberlin.net



COLUMBIA



TOMBERLIN